

# Extra Pocket for the Knitting Needle Case

## Pattern Add-on by @zaudalcreates

---

You can replace one of the flaps with this pocket and get an additional storage for your knitting stash such as interchangeable needle cables, scissors etc.



### **Materials:**

Cotton, main fabric: 16 x 50 cm (6 ¼" x 19 ¾")

Cotton, lining fabric: 13 x 50 cm (5 ¼" x 19 ¾")

Light to Medium weight fusible Interfacing: 14 x 50 cm (5 ½" x 19 ¾")

4 -6mm Zipper 15 cm (6") long

A piece of leather approx. 12.5cm (5") long for the zipper-pull.

Wonder tape

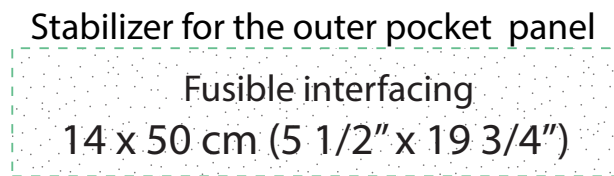
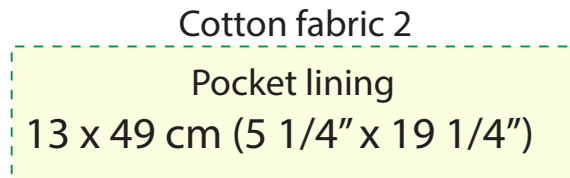
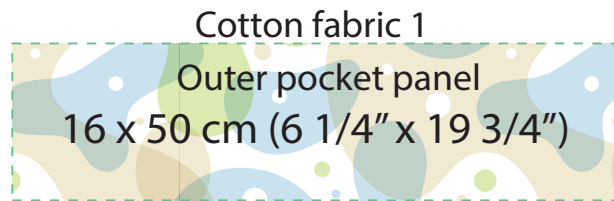
Matching thread

Zipper foot

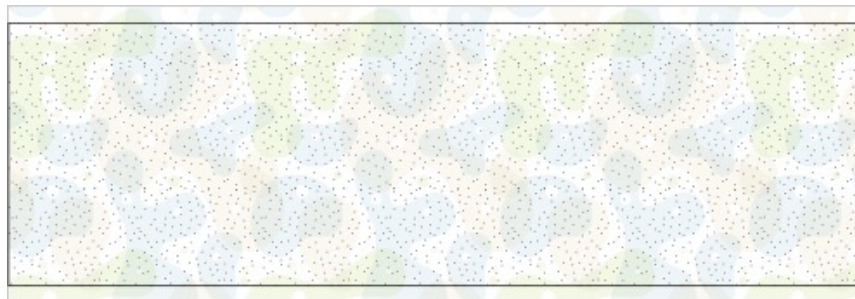
See also notions in the main pattern

**Instructions:**

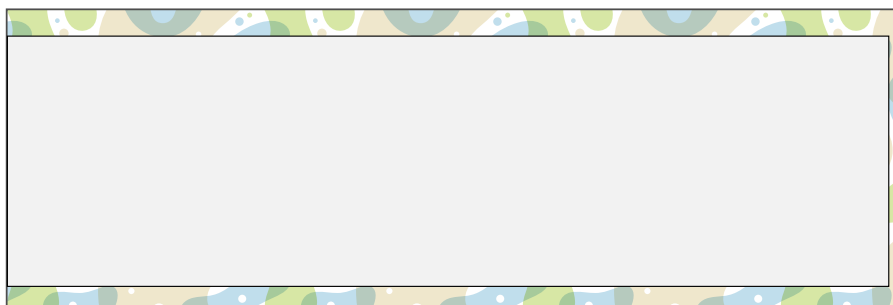
1. Cut the materials according to given cutting layout/measurements



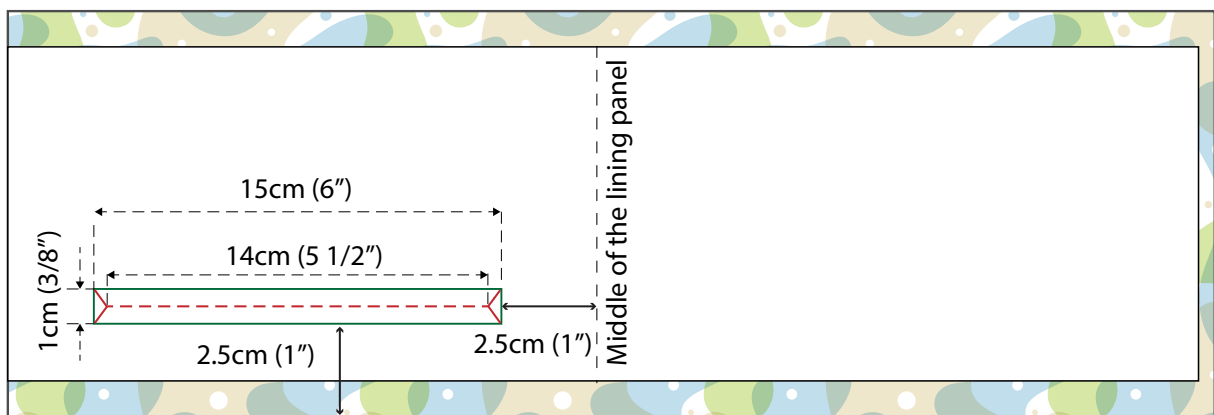
2. Place fusible interfacing on the outer pocket panel wrong sides together and press with a hot iron.



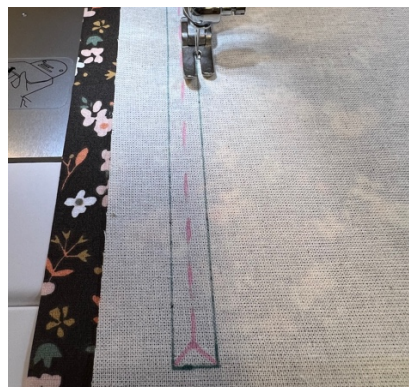
3. Take the outer pocket panel with attached interfacing and place it on the table right side up.  
Take the pocket lining panel and place it on the outer pocket panel right sides together aligning on the left edge, pin.



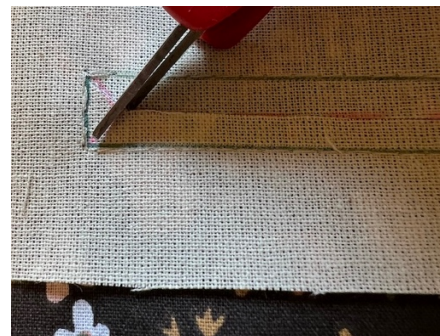
4. Draw the rectangle for the zipper opening according to the measurements given in the illustration below, 1x15cm ( $\frac{3}{8}$ "x6")
  - a) Fold the panels in half just to define the middle
  - b) Draw the window opening (green rectangle in the picture) 2.5cm (1") from the middle of the panel and 2.5cm (1") from the bottom edge. *\*The length of the window opening should be the same as your zipper's teeth length.*
  - c) Draw the line in the middle of this rectangle, this line should be 1cm ( $\frac{3}{8}$ ") shorter than the length of the rectangle.
  - d) Draw V-shapes at both ends as shown in the illustration below.



5. Stitch along the outline of the drawn rectangle forming the zipper opening.



6. Cut both layers of fabric along the middle line. Cut the V-shapes at both ends making sure not to cut into stitches.





7. Pull the pocket lining on the other side through the zipper hole and press with a hot iron.



8. Apply a Wonder tape (double-sided sewing tape) on the top and bottom of the zipper opening.



9. Place the zipper in the opening (zipper pull should be closer to the raw edge side) and sew around using 1 - 2mm (1/16") from the edge.



10. Use matching thread and the zipper foot on your sewing machine



11. Fold the lining of the pocket together aligning at the top raw edge and sew the sides (of the lining only) closed. Seam allowance is 1cm (3/8").



12. Fold the outer pocket panel right sides together and sew both sides closed, seam allowance is 1cm (3/8").  
Cut the bottom corners within the seam allowance, turn right sides out and press.





13. Put a zipper pull on your zipper, use Wonder tape to fixate it, stitch a few stitches on it. You can use a triple stitch on your sewing machine.



14. Cut the thread ends 0.6 cm (1/4") from the stitch and then burn the rest of the thread with a lighter. Now your pocket is ready to replace one of the flaps.



Feel free to email me if you have any questions or feedback:  
[olga.zaudal@gmail.com](mailto:olga.zaudal@gmail.com)

Please use #tinnberry in all item description when selling or listing items you have made from this pattern. See more: [www.tinnberry.com](http://www.tinnberry.com) or @zaudalcreates on Instagram.